

WITH THE EXPANSION OF THE WOLF POPULATION ALSO IN THE DENSELY INHABITED HILLY AND LOWLAND AREAS, THE OPPORTUNITIES FOR SIGHTINGS WOLVES IN INHABITED AREAS ARE INCREASING.

Wolves (and wildlife in general) may approach human settlements, sometimes even in daylight, especially during the winter period. Under special conditions (i.e. if the wolf is out of the wind) close encounters may occur.

Bold wolves are wolves that voluntarily and repeatedly tolerate recognisable humans within 30 m, or that repeatedly approach humans to within this distance. A prerequisite for bold behaviour is habituation, which can be increased by positive conditioning, for example the voluntary or involuntary offering of food to the animal. Even the presence of dogs can attract the wolf's attention, who may consider them as competitors, prey, or mating partners.

Partners



Co-Financers



www.lifewolfalps.eu



I SAW A WOLF!

How to behave if you encounter a wolf

www.lifewolfalps.eu ■ info@lifewolfalps.eu



THE LIFE WOLFALPS EU PROJECT

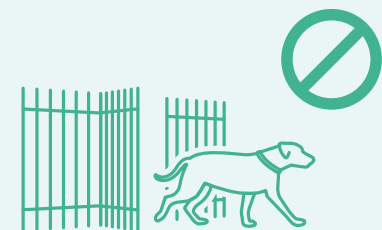
The **LIFE WOLFALPS EU** project works to improve coexistence between the wolf and the people who live and work in the Alps and the Ligurian-Piedmontese Apennines by building and implementing shared solutions together with stakeholders to ensure the long-term conservation of the wolf in the Alps and along the Apennine corridor.

LIFE WOLFALPS EU operates throughout the Alps and the Ligurian-Piedmontese Apennines, involving twenty Italian, Slovenian, French and Austrian partners and dozens of Institutions and associations that support the project.

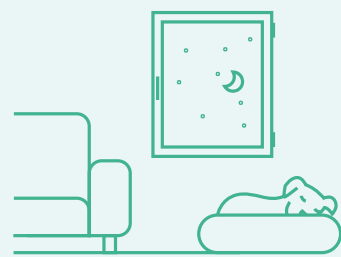
In the event that confident behavior is observed in wolves, it is crucial to report it to the competent authorities:

112 Carabinieri Command for Forest Protection

IN INHABITED/URBAN CONTEXTS



Do not let the dog wandering loose alone.



Keep the dog in a night shelter (in a kennel or inside the house), especially if in heat, during twilight/night hours.



Do not leave food sources near homes (organic litter, food remains, pet food).

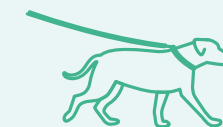


Never, under any circumstances, attempt to approach the wolves (applies also to any other wild animals) or interfere with their behaviour.

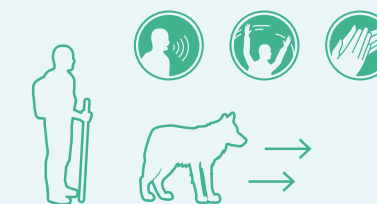


Never feed wolves and wild animals.

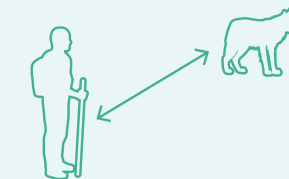
IN NATURAL SETTINGS



Always keep **your dog on a leash** and do not let it run loose.



If you feel uncomfortable, **just speak loudly** and possibly **wave your arms** or **clap your hands**: in most cases the wolf will move away spontaneously.

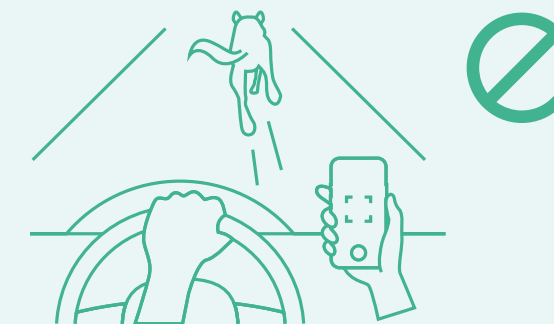


If you observe one or more wolves from a distance, the advice is to **remain silent and observe them without interfering** with their activities. Do not attempt to approach them.



If it does not move away walk **slowly backwards**, talking, without running.

IN A CAR



As with any wild animal, it is **absolutely forbidden to chase them in order to take videos or photos**. In any case, you must never get out of the car, but slow down or pull over and wait for the animals to cross.



LIFE WOLFALPS EU

